



MIT  
**WORLD PEACE  
UNIVERSITY**

Transdisciplinary. Technological. Transformative.

Integration is the  
*New Intelligence*

First Transdisciplinary,  
Fully Residential University of India



Born from one of India's most extensive academic co-creation process, guided by **leading global and national leaders**, and built on a four-decade legacy of educational excellence.

WPU G $\bar{O}$ A is built on the idea- "**the future belongs to those who can connect the dots**". Our education model **blends intellect, empathy and experience**.

**WPU  
G $\bar{O}$ A**

Our students learn in **villages, global capitals, and moments of silence**. We don't just teach what to know- **we shape how to think & how to solve**.

*Welcome to  
WPU G $\bar{O}$ A.*

LIVE

LEARN

DISCOVER

APPLY

BECOME

Where  
Disciplines Meet,  
*Futures Emerge.*

# WPU GŌA, began with a question:

*“What should a university for the next 50 years look like?”*

The answer was shaped over several years through deep collaboration with leading thinkers from India and around the world across education, governance, science, design, innovation, and leadership. This process stands among the largest academic co-creation initiatives in the country.

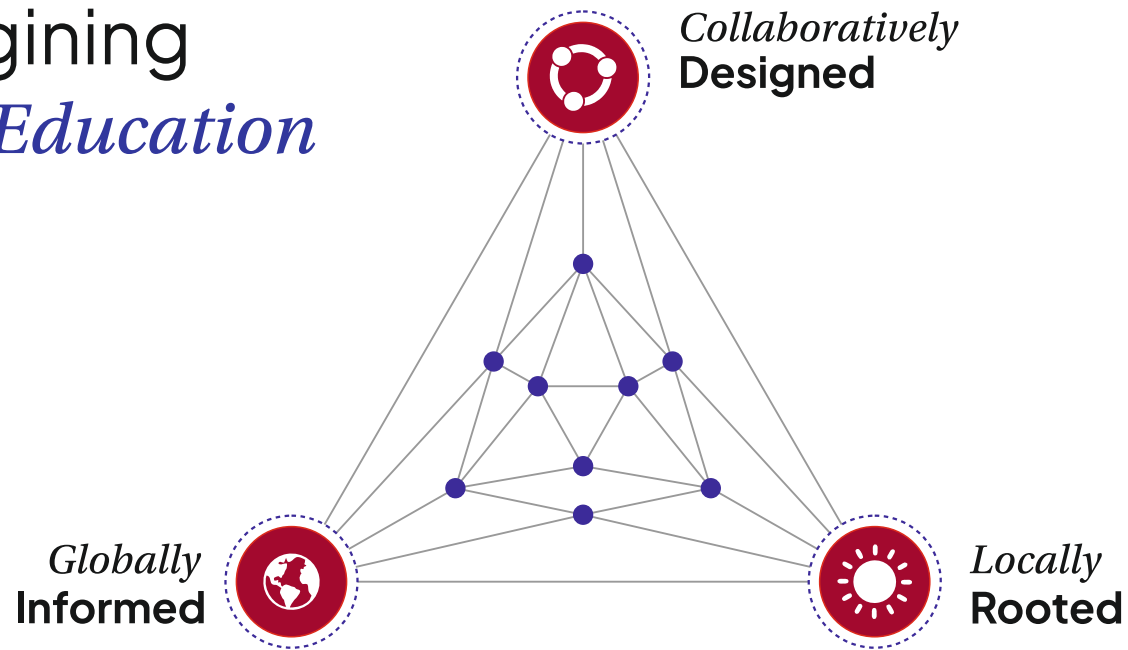
Insights from renowned **national and international thinkers**

**28 National Visioning Workshops** were conducted across India, **engaging academics, researchers, practitioners, and institutional strategists.**

**10 Global Visioning Workshops** were conducted worldwide with **renowned professors from leading universities**



# Reimagining *Higher Education* in India



An ecosystem that nurtures the intellectual, physical, emotional, social and ethical dimensions of every student.

Built on principles of  
*Transdisciplinary thinking*

Co-created by a global community of  
*1,000+* scholars across *38* locations

Designed to *prepare leaders*  
for a complex, interconnected world



# Think Across Learn Beyond

*Transdisciplinary- a new way of learning*

Real-world problems do not fit into one subject or domain.

**Saving the planet** takes more than science.

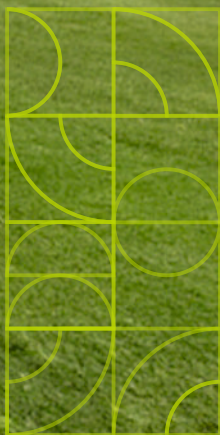
**Building better healthcare** takes more than medicine.

**Creating new ideas** takes more than technology.

That is why learning should **go beyond just one field.**

*At WPU GŌA, students work on real-world challenges by bringing together ideas from different subjects.*

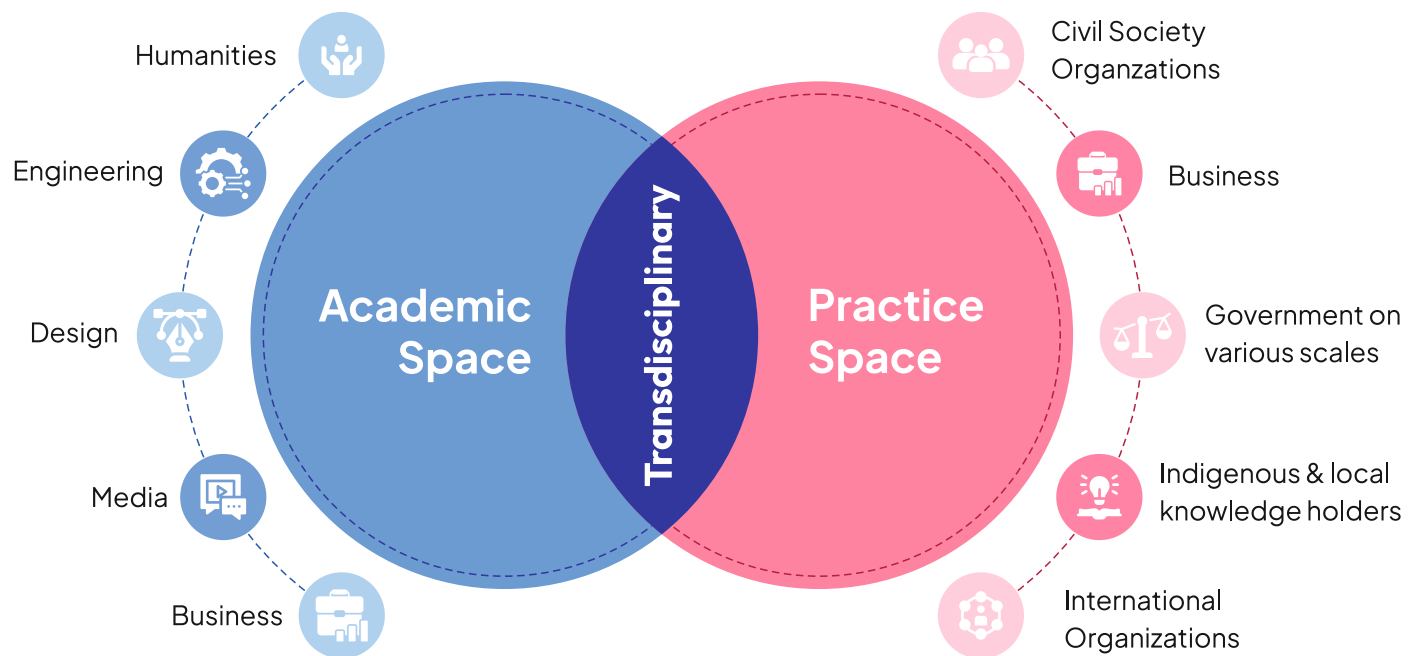
*You learn to connect knowledge, think big, and find smarter solutions for the world.*



# What is *Transdisciplinary Learning*?

*Transdisciplinary Learning integrates knowledge across and beyond disciplines to solve complex, real-world challenges.*

## *Where Academics and Practice merge*



**1** Problem driven,  
not discipline  
driven

**2** Collaborative  
knowledge  
creation

**3** Emphasis  
on systems  
thinking

**4** Flexible  
learning  
pathways

# Core *Leadership*

Guided by visionary leaders who bring **integrity, experience, and excellence**, shaping the university's academic and ethical foundation.



*Prof. Satish  
Tripathi*

**Hon. President,  
Governing Board,  
WPU GÖA**

President,  
University at Buffalo,  
USA



*Prof. Walter  
Leal Filho*

**Vice Chancellor  
(Designate),  
WPU GÖA**

Professor, Hamburg  
University of Applied  
Sciences, Germany



*Mr. D.  
Shivakumar*

**President,  
Industry Advisory Board,  
WPU GÖA**

Former Chairman and  
CEO, PEPSICO India

## Core *Visioning* Group

Educators who shaped the vision of WPU GÖA



**Prof. Ram  
Charan**

World Renowned  
Business Advisor,  
Author and Speaker



**Dr. Raghunath  
Mashelkar**

Padma Vibhushan,  
Chancellor, ICT Mumbai  
Former DG, CSIR



**Dr. Vijay P.  
Bhatkar**

Padma Bhushan,  
Chancellor,  
Nalanda University



**Dr. Vinita S.  
Sahay**

Director,  
IIM Bodh Gaya



**Prof. Anil Kumar  
Gupta**

Vice-Chair, National  
Innovation Foundation



**Shri Rajeev  
Sethi**

Padma Bhushan,  
Chairperson, Asian  
Heritage Foundation



**Prof. Kavil  
Ramachandran**

Prof. of Entrepreneurship  
(Practice) & Senior Advisor,  
Thomas Schmidheiny Centre  
for Family Enterprise, ISB



**Adv. Dr. Lalit  
Bhasin**

Sr. Advocate & Arbitrator



**Dr. Milind  
Kamble**

Founder, DICCI



**Shri Nishith  
Desai**

Founder, Nishith Desai  
Associates



**Prof. Praveen  
Nahar**

Former Director, NID



**Dr. Ashok  
Joshi**

Eminent Scientist,  
President, Microlin  
Technologies, USA



*Prof. Suresh  
Garimella*

**Chairman,  
Global Advisory Board,  
WPU GÖA**

President, University  
of Arizona, USA



*Prof. Pankaj  
Chandra*

**Advisor,  
WPU GÖA**

Vice Chancellor,  
Ahmedabad University



*Dr. Rahul V.  
Karad*

**Executive President  
WPU GÖA**



**Prof. Rishikesh  
Krishnan**

Former Director,  
IIM Bengaluru



**Prof. Bhushan  
Patwardhan**

Prof. of Health  
Sciences, Former  
Executive Committee  
Chairman, NAAC



**Prof. G.  
Raghuram**

Former Director,  
IIM Bengaluru



**Prof. Himanshu  
Rai**

Director, IIM Indore



**Prof. Sudhir  
Krishnaswamy**

Vice-Chancellor,  
NLSIU Bengaluru



**Prof. Rama  
Bijapurkar**

Business Advisor  
Visiting Faculty,  
IIM Ahmedabad



**Prof. Trilochan  
Sastry**

Former Dean,  
IIM Bengaluru



**Prof. Uday  
Desai**

Former Director,  
IIT Hyderabad



**Shri Pramath  
Raj Sinha**

Founder & Trustee,  
Ashoka University



**Dr. Varun  
Sahni**

Prof. at JNU, Former  
Vice-Chancellor,  
Jammu University  
and Goa University



**Prof V. G.  
Narayan**

Prof. Business  
Administration,  
Harvard Business  
School



**Late Prof. Mendu  
Rammohan Rao**

Dean Emeritus of Indian School  
of Business (ISB),  
Hyderabad.



02<sup>nd</sup> - 04<sup>th</sup> May 2025



## Global Visioning Conferences

Aug.-Sept., 2025

Sept.-Nov., 2025



### 28 cities across India

664 faculty participants, scholars from **IITs, IIMs, NLU, NIDs** and other leading institutions

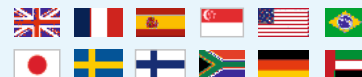


**Connecting Continents, Transforming Learning:**  
A transdisciplinary dialogue for futures of education



### 10 countries

281 World-class academicians, innovators and change-makers across **six continents**



# *A new model of higher education*

Moving beyond siloed degrees, WPU GÖA offers an integrated, systems-oriented learning experience through:



Transdisciplinary curriculum



Discovery-driven pedagogy



Integrated research ecosystems



Living Learning Scholar Communities

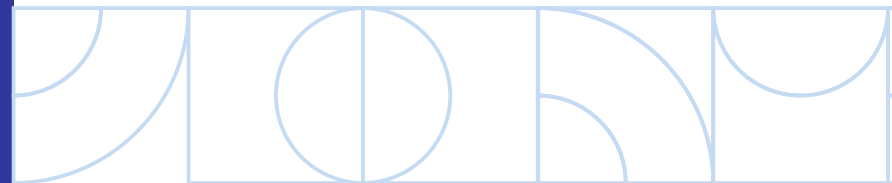


Centres of Excellence for fundamental and applied knowledge



WPU GÖA, the next iconic university of our country, is a **purpose-built university for the 21<sup>st</sup> century designed for complexity, rapid change, and India's future.**

It is engineered around one idea: *“Complex problems require integrated thinkers.”*

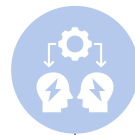




## *Vision*

To be the world's leading transdisciplinary university dedicated to peace and sustainability, designing and demonstrating regenerative futures, where human societies thrive in harmony within planetary boundaries.

## *Mission*



**Educate** empathetic, systems-thinking leaders.



**Generate** transformative, actionable research.



**Catalyse** real-world innovation and policy.



MIT  
**WORLD PEACE  
UNIVERSITY**

Transdisciplinary. Technological. Transformative.

*Five Pillars of our  
Educational Model*



# Integration is the *new intelligence*

LEARN

## Academic Programmes

*What You Learn*

You build strong knowledge in your chosen field while exploring ideas across subjects.

What you learn in class connects directly to research, projects, and real-world work.



LIVE

## Learning Communities

*How You Live and Learn*

Students live and learn together in shared communities built around real-world themes.

This strengthens teamwork, leadership, and helps you apply what you study every day.



WPU GŌA is built on five interconnected pillars that work together to transform education.

*Individually strong.  
Together, transformative.*

DISCOVER

## Research Institutes

*How You Explore and Discover*

From the first year, you take part in real research linked to new technologies and social needs.

Your coursework feeds into research, and research deepens your learning.



APPLY

## Centres of Excellence

*How Ideas Become Action*

Labs, studios, and industry partnerships turn ideas into real solutions.

Here, what you learn and research becomes hands-on experience.



BECOME

## Human Performance

*How You Grow as a Person*

Daily wellness, fitness, and focus help you stay healthy, confident, and resilient.

A strong body and mind support everything you learn and create.



# The *World* is your *Campus*

Begin a journey that shapes who you become, not just what you learn.



1<sup>st</sup> Year

- Initial **academic** onboarding
- **Foundational** studies
- **International immersion**
- **Life Realisation Programme** (Focus: **Leadership, Spirituality**).
- Domain-Specific **Industry Immersion** (Pune) and Expert Talks.



2<sup>nd</sup> Year

- **Rural Immersion** (Goa) for community engagement.
- **Global Industry Showcase**—visit do domain specific industry conventions in Asia
- Internship with an **NGO**, a **social organization**, or an **IAS officer**.



This is what transdisciplinary education creates.  
Not graduates but *Changemakers*

LEARN



# One Degree. Many Possibilities. *Boundless Opportunities.*

At WPU GOA, every programme is designed to go beyond one field.

Engineers learn **business and social science**.

Designers learn **technology and human behaviour**.

Business students learn **technology and ethics**—

so every student graduates with a broad, future-ready mindset.

## Academic Programmes



- B.Tech. in Computer Science & Engineering
- B.Tech. in Electronics & Semiconductor Engineering
- B.Tech. in Energy System Engineering



- B.Des. in Integrated Product Design
- B.Des. in Communication Design
- B.Des. in Human-Computer Interaction (HCI)



- B.Sc. (Hons.) in Psychology
- B.Sc. (Hons.) in Economics



- B.Sc. (Hons.) in Film, Media and Communications



- Bachelor of Management Studies (BMS)

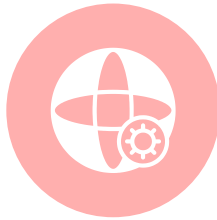
# Immersions

By the time students graduate, they have worked in **five different ecosystems, across three sectors, solving real-world problems.**



## Global Exposure

- International Immersion (innovation hubs, global firms, design studios, smart city labs, accelerators)
- Global exchange programmes



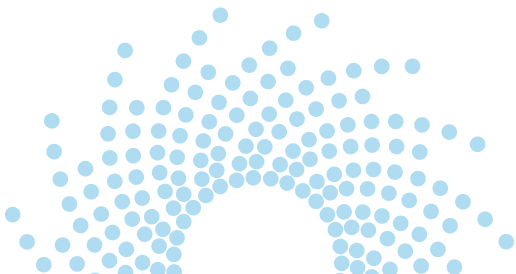
## National Systems Exposure

- National Immersion at leading institutions (IITs, IIMs, research centres)
- Exposure to industry ecosystems across India

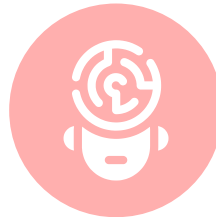


## Industry-Facing Experiential Learning

- Industry visits
- Leading trade shows (Dubai and others)
- Industry internship

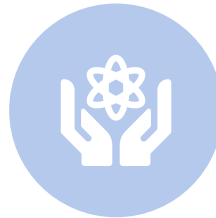


# LEARN



## Societal Immersion and Behavioural Insight

- NGO internship / social immersion (rural livelihoods, social enterprises, SHGs, development systems)
- Local economy studies, behavioural research and community-based projects



## Holistic Development and Values Formation

- Life Transformation Centre immersion
- Learning in ethics, leadership, emotional intelligence, identity, and purpose
- Active Citizenship Training



*We don't just prepare students for the real world - they have already lived in it, many times and in many ways.*

# Living Learning Scholar Communities

Living Learning Scholar Communities are student groups built around big ideas and real-world problems. Students come together to explore what they care about, share ideas, and create solutions. Here, you don't just study, you work in teams, take responsibility, and learn by doing. It's learning with purpose, alongside people who share your interests.



## Ethics and Critical Reasoning

Explore values, fairness, and responsible choices.

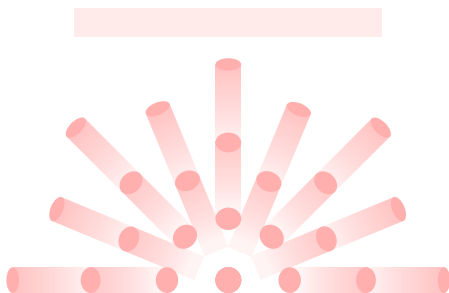
***For students passionate about justice, integrity and ethical decision making.***



## Media, Arts & Society

See how stories, art, and media shape culture.

***For creators, communicators, and cultural thinkers.***





## Global Citizenship and Youth Leadership

Learn how to lead and make a difference in the world.

*For students who want to create change locally and globally.*



## Design, Technology and Society

Use design and innovation to solve real problems.

*For makers, technologists, and creative problem-solvers.*

LIVE



## Environmental Action and Studies

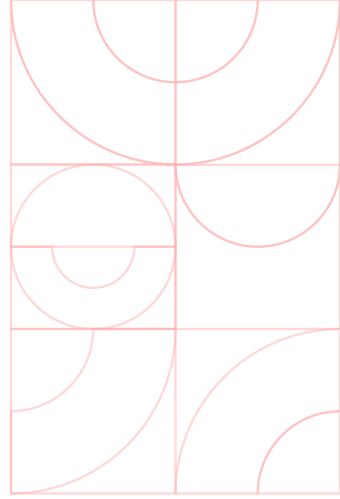
Learn about sustainability, climate, and protecting the planet.

*For students who care about the Earth and the future.*

# *Research* Embedded in Academics

At WPU GÖA, you are a researcher from day one. Research is not separate from student life, it is part of your classes, projects, and learning.

*This builds curiosity, critical thinking, and the confidence to solve real-world problems.*



## Research Institutes

Our Research Institutes let students explore deep topics or work across different fields. You join research teams early, learning how to ask questions, test ideas, and create solutions.



### Human – Machine Interaction (AI / Data Science for Society)

Human Centric AI and Interaction, Data Science for Social Good, Human – Robot Interaction, Responsible & Ethical AI.



### Environmental Sustainability and Resilience

Climate Change Solutions, Renewable Energy, Circular Economy, and Waste Management.



### Ocean Sciences and Management

Ocean and Coastal Ecosystems, Sustainable Blue Economy, Ocean Technology and Innovation, Marine Policy.



### Advanced Materials, Manufacturing and Energy Systems

3D Printing, Next-Generation Energy Systems, Materials and Energy for Mobility, Industry 4.0 & Automation.



### Biodesign and Biotechnology

Synthetic Biology & Genetic Engineering, Agricultural and Food Biotechnology, Computational and Systems Biology.



**Prof. M. S.  
Swaminathan**

Centre of  
*BioHappiness*

To build India's first integrated ecosystem where nature, agriculture, health, technology, AI, data, society, livelihoods, and policy come together to create real solutions for a sustainable and fair future.



**Prof. Raghunath Mashelkar  
and Prof. Anil Gupta**

Centre for  
*Social Innovation*

To drive simple, affordable, and community-led innovations by combining grassroots knowledge, scientific thinking, and collaboration across research institutes, learning communities, and global partners.



**Prof. Vishwanath  
Karad**

Centre of *Brain, Mind  
and Consciousness*

To promote peace and harmony by understanding how religion, spirituality, and justice-based institutions help build fair and inclusive societies.



**Prof. Ram Charan**

Centre of *Strategic Leadership  
and Organisational Excellence*

To develop leaders and organizations that think clearly, act with discipline, lead ethically, and achieve long-term success by connecting strategy with strong execution.

## Centres of *Excellence*

WPU GÖA's Centres of Excellence connect the university with society and industry. They bring real-world needs and new technologies into learning, helping students become skilled professionals and meaningful contributors.

Connecting

- *Society*
- *Industry*
- *Education*



## Shri T. N. Seshan

*Centre for Government  
Leadership & Public Policy*

To develop honest and future-ready leaders rooted in India's values, combining strong leadership, modern governance, ethical decision-making, youth participation, and global exposure to build fair and people-focused public systems.



## Prof. Fernando Garibay

*Centre for Diplomacy,  
Human Creativity & Artificial Intelligence*

To bring together human creativity and AI to build people-focused technologies that support global understanding, conflict resolution, and community well-being through international collaboration.



## Shri Rajeev Sethi

*Centre for Innovation  
and Design*

To advance design research that brings together systems thinking, human-centered design, and real-world practice to solve social, environmental, and technological challenges at every scale.



*Centre for Creativity,  
Film & Music*

To grow the next generation of creators by blending arts, culture, and technology, while taking India's creative traditions to the global stage.



*Centre for  
Transdisciplinary Education*

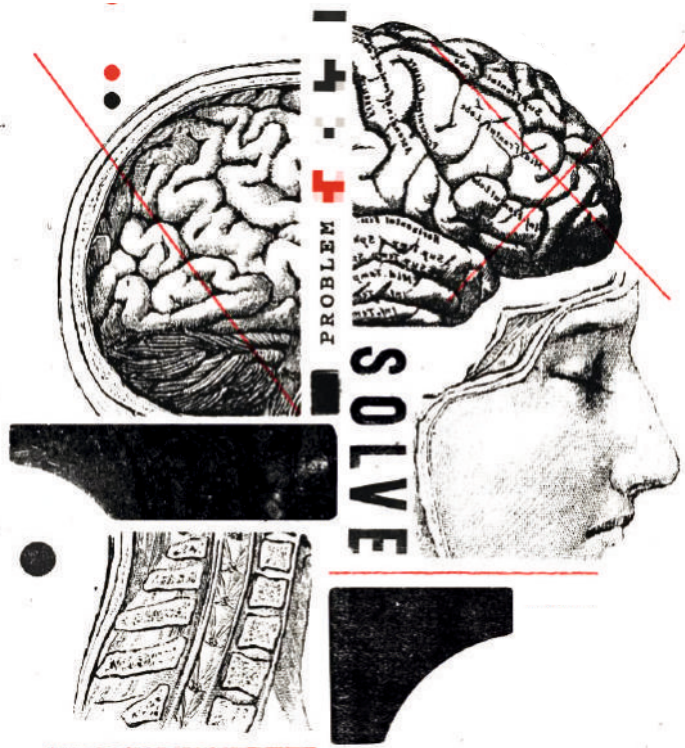
To help students think across subjects and cultures by working with experts and communities to solve complex problems with empathy and clarity.



# Human Performance & Longevity

The College of Human Performance and Longevity is a core part of the WPU G $\ddot{O}$ A experience.

WPU G $\ddot{O}$ A is India's first Human Performance and Longevity Campus. While academics build the mind and purpose, this college builds the body, habits, and resilience that support lifelong success.



## *Beyond Academics*

Our guiding philosophy is simple:

*Students should not only learn well,  
they should live well.*

---

True success comes from a strong mind, a healthy body, a disciplined lifestyle, and a sense of purpose. This college ensures students graduate with not just knowledge, but also energy, focus, and lifelong wellness habits.

# BECOME

## *Integrated Focus Areas*



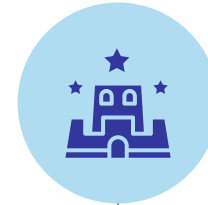
### *Campus Health, Nutrition and Fitness*

Health is part of daily life through movement, strength training, balanced nutrition, fitness tracking, and stress and sleep care. This helps students stay sharp, active, and energized.



### *Sports Centre of Excellence*

A high-performance sports ecosystem with scientific training and expert coaching to help students compete at state, national, and international levels.



### *Longevity Campus Initiative*

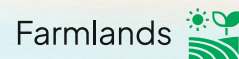
A campus designed to support long, healthy lives, with active spaces and Blue Zone-inspired nutrition and habits.



# *Goa is not just our location, it is our living classroom.*

It reflects the world in one place, where growth meets nature, culture meets tourism, and local life meets global ideas. This makes Goa the perfect place to learn how to create balanced and sustainable solutions.

Goa is also a place for dreamers, creators, and bold thinkers. Its natural beauty and rich culture inspire focus, creativity, and well-being, the ideal setting for personal and professional growth.



*Here, everyday life is about  
finding harmony between  
nature, ideas, and yourself.*



Goa is home to artists, designers, musicians, filmmakers, and thinkers from around the world. This creative energy makes it the perfect place for our programs in Technology, Design, Management, and Liberal Arts. Here, your surroundings inspire new ideas, it's like living in an open studio.



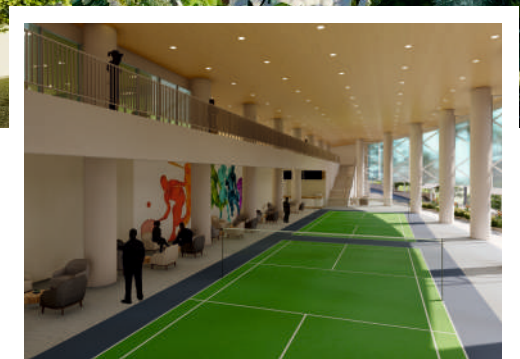
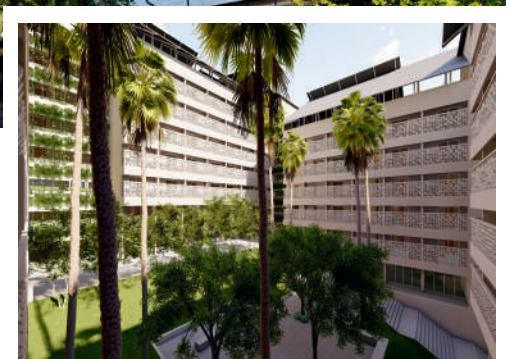
Goa is also one of India's safest, cleanest, and most peaceful places to live. Its fresh air and calm environment help you stay focussed, confident, and ready to build a successful career.



With its rich history and mix of cultures, Goa is full of music, art, and community life. This strong cultural base, combined with global exposure, helps you grow with empathy, purpose, and a clear sense of who you are.

# *The Campus*

A Purpose-Built Ecosystem



At WPU GŌA, learning goes beyond classrooms. Our fully residential campus is designed as a living ecosystem where nature, ideas, and different fields come together. Designed by renowned architect Stephen Paumier, the campus features open courtyards, natural light, and seamless indoor-outdoor spaces that bring students from Engineering, Design, Sciences, and Liberal Arts together, sparking ideas and collaboration.

Every space supports teamwork, and resilience, while offering a high-quality and sustainable way of living and learning. This purpose-built campus encourages creative thinking, real problem-solving, and personal growth.

It is a place where  
*purpose meets possibility,  
and where you discover who  
you are meant to become.*





Student Housing Block



Student Dining



Sports Complex



Swimming

Faculty Housing Complex



Sports Complex



Library



Sports Complex



S. No. 88, Sub-Division No. 1-B, Thivim  
Village of Bardez Taluka, Goa

g pool

**Auditorium**



**Sports  
Complex**



**Academic  
Block**



Thivim Railway Station ..... 2-5 mins



Mapusa ..... 15-20 mins

Panaji ..... 35-40 mins



Mopa International Airport ..... 30 mins



Goa International Airport  
(Dabolim Airport) ..... 60 mins



# Admissions

The WPU G $\bar{O}$ A Admissions Committee looks beyond academic performance in standardized tests and board exams, seeking candidates who demonstrate strong character, meaningful experiences, and clear future motivation. Our admissions process is designed to identify well-rounded, high-potential students who can actively contribute to and enrich the learning environment at WPU G $\bar{O}$ A.

*Apply early to secure your place at one of India's most forward-looking universities.*

## Three *Core Pillars* of Selection

WPU G $\bar{O}$ A looks for students who demonstrate at least one of the three interconnected dimensions of our ABC Model that reflect the skills and mindset essential for thriving in our transdisciplinary learning environment.



### **Agility & Empathic Responsiveness**

Your ability to adapt to change, show resilience, and demonstrate empathy.



### **Broad-Minded Learning Orientation & Self-Development**

Your capacity for curiosity-driven learning, independent thinking, and openness to growth.



### **Curiosity for Complex Problems & Co-Creation for Change**

Your interest in real-world challenges and resolving them through collaboration and teamwork.



At WPU G $\bar{O}$ A, we evaluate candidates based on their holistic performance using the ABC Model across all evaluation parameters.

A single score does not determine selection; instead, emphasis is placed on the overall profile, which should demonstrate strength and potential in various aspects.



## Admissions *Process*



*Apply today and secure your place!*



Refer to our website for more details



## Overview of *MAEER & MIT Group*

**5**

Universities

**86000+**

Students

**2000+**

Bed Hospital

**25+**

CBSE and State  
Board Schools

**40+**

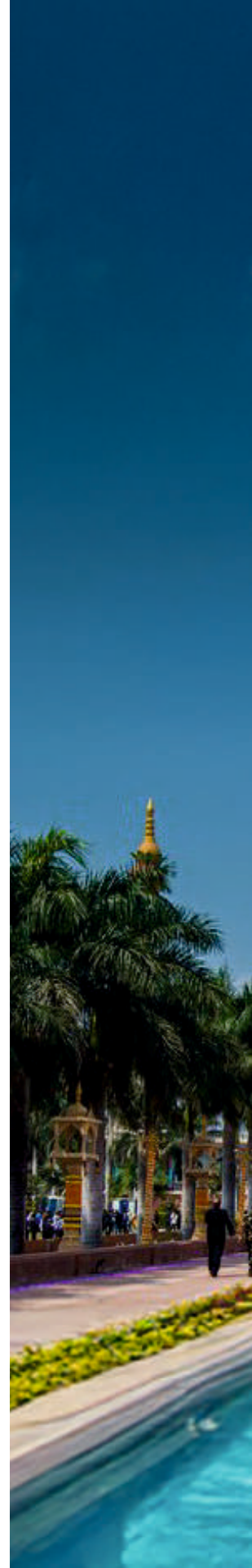
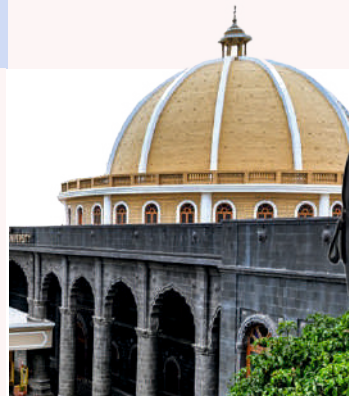
Higher Education  
Institutes

**Multiple**

Social Projects

**2**

**Medical Colleges**  
(3<sup>rd</sup> Coming Soon)



# World Peace Dome

World's  
Largest Dome

The World Peace Dome is a living laboratory where students explore world peace through the integration of science and spirituality, and actively contribute to a more peaceful world.



## The Flagship University MIT-WPU, Pune *at a glance*

**50 Cr**  
Scholarships

**100+**  
Students Clubs

**240+**  
Modern Labs

**45+**  
Nationalities

**2000+**  
Industry Connects

**20+**  
Centres of Excellence

**540+**  
Patents

**25000+**  
Students on Campus

**100000+**  
Alumni Across  
the Globe

**6000+**  
Research  
Publications

*Asia's First Subsea Laboratory*

*Among the top 10 educational  
foundations/trusts in India*



**WPU  
GŌA**

We nurture creative, future-ready leaders through transdisciplinary, inclusive, sustainable and globally relevant education.

**WPU GŌA Campus Address:**

S. No. 88, Sub-division No. 1-B, Thivim Village of Bardez Taluka, GOA

**For Admission:**

✉ [admissions@wpugoa.edu.in](mailto:admissions@wpugoa.edu.in) ☎ +91 86050 07433



[www.wpugoa.edu.in](http://www.wpugoa.edu.in)

[f](#) [@](#) [X](#) [v](#) /WPU GOA

