

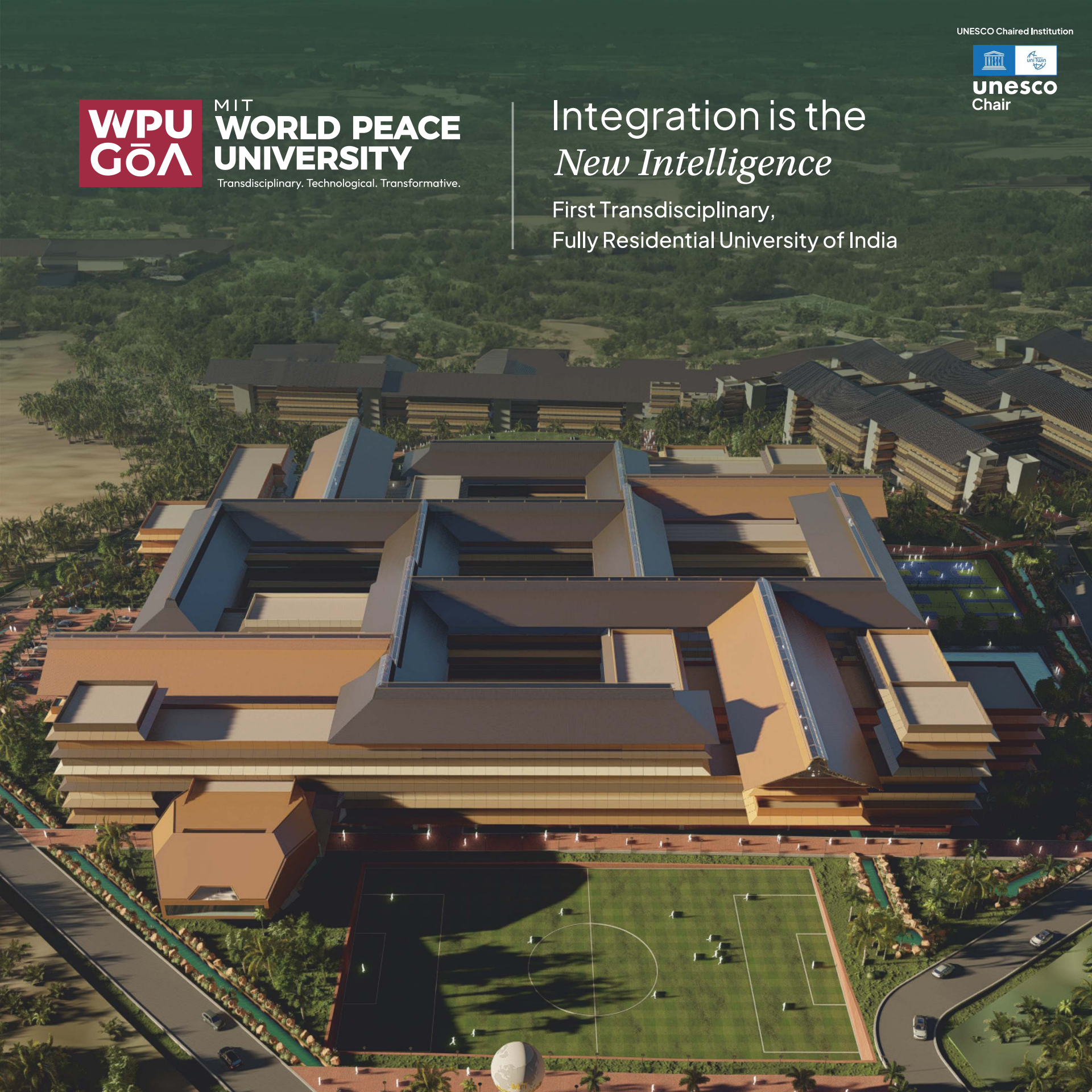


MIT
**WORLD PEACE
UNIVERSITY**

Transdisciplinary. Technological. Transformative.

Integration is the
New Intelligence

First Transdisciplinary,
Fully Residential University of India



Born from one of India's most extensive academic co-creation process, guided by **leading global and national leaders**, and built on a four-decade legacy of educational excellence.

WPU G \bar{O} A is built on the idea- "**the future belongs to those who can connect the dots**". Our education model **blends intellect, empathy and experience**.



Our students learn in **villages, global capitals, and moments of silence**. We don't just teach what to know- **we shape how to think & how to solve**.

Welcome to WPU G \bar{O} A.

LIVE

LEARN

Where Disciplines Meet,
Futures Emerge.

DISCOVER

BECOME

APPLY

WPU G \bar{O} A, began with a question:

“What should a university for the next 50 years look like?”

The answer was shaped over several years through deep collaboration with leading thinkers from India and around the world across education, governance, science, design, innovation, and leadership. This process stands among the largest academic co-creation initiatives in the country.

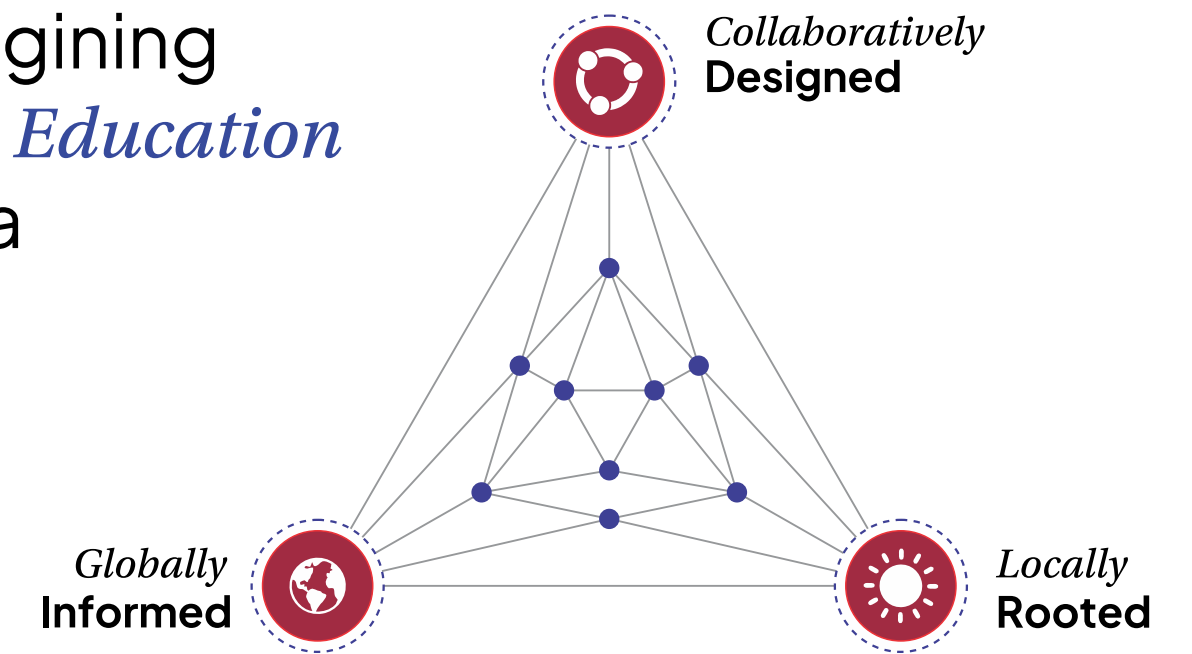
Insights from renowned **national and international thinkers**

28 National Visioning Workshops were conducted across India, **engaging academics, researchers, practitioners, and institutional strategists.**

10 Global Visioning Workshops were conducted worldwide with **renowned professors from leading universities**



Reimagining Higher Education in India



An ecosystem that nurtures the intellectual, physical, emotional, social and ethical dimensions of every student.

Built on principles of *Transdisciplinary thinking*

Co-created by a global community of **1,000+** scholars across **38** locations

Designed to *prepare leaders* for a complex, interconnected world



Think Across Learn Beyond

Transdisciplinary- a new way of learning

Real-world problems do not fit into one subject or domain.

Saving the planet takes more than science.

Building better healthcare takes more than medicine.

Creating new ideas takes more than technology.

That is why learning should **go beyond just one field.**

At WPU GŌA, students work on real-world challenges by bringing together ideas from different subjects.

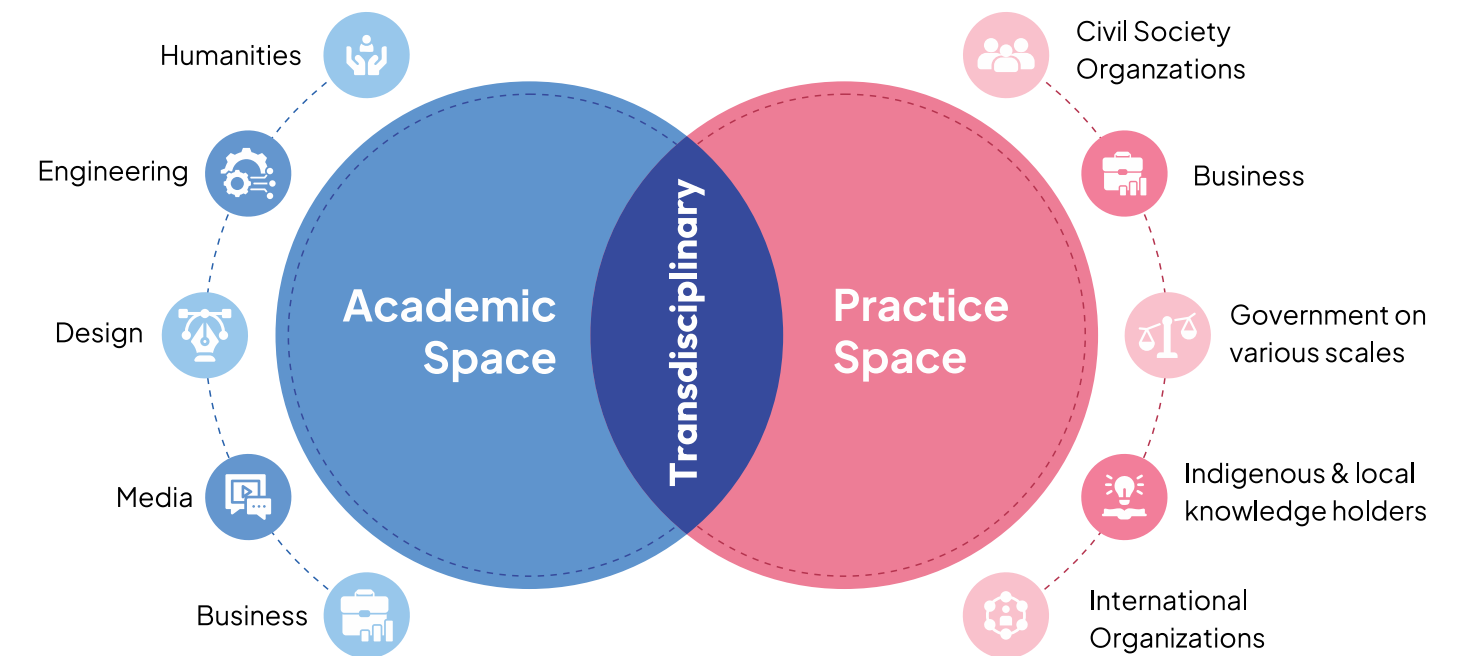
You learn to connect knowledge, think big, and find smarter solutions for the world.



What is *Transdisciplinary Learning?*

Transdisciplinary Learning integrates knowledge across and beyond disciplines to solve complex, real-world challenges.

Where Academics and Practice merge



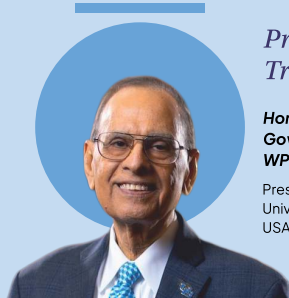
- 1 Problem driven, not discipline driven
- 2 Collaborative knowledge creation
- 3 Emphasis on systems thinking
- 4 Flexible learning pathways

Core Leadership

Guided by visionary leaders who bring **integrity, experience, and excellence**, shaping the university's academic and ethical foundation.

WPU GŌA

Leadership Leadership that translates the WPU GŌA vision into reality



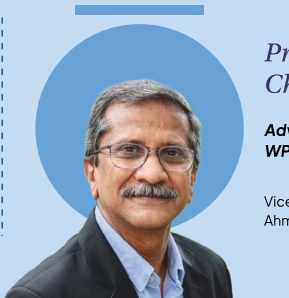
Prof. Satish Tripathi

Hon. President, Governing Board, WPU GŌA
President, University at Buffalo, USA



Prof. Suresh Garimella

Chairman, Global Advisory Board, WPU GŌA
President, University of Arizona, USA



Prof. Pankaj Chandra

Advisor, WPU GŌA
Vice Chancellor, Ahmedabad University



Mr. D. Shivakumar

President, Industry Advisory Board, WPU GŌA
Former Chairman and CEO, PEPSICO India



Prof. Walter Leal Filho

Vice Chancellor (Designate), WPU GŌA



Dr. Ashish Bharadwaj

Pro Vice Chancellor & Dean of Academics, WPU GŌA



Dr. Vijayan Karippal

Chief Operating Officer (COD) & Registrar WPU GŌA

Core Visioning Group

Educators who shaped the vision of WPU GŌA



Prof. Ram Charan

World Renowned Business Advisor, Author and Speaker



Dr. Raghunath Mashelkar

Padma Vibhushan, Chancellor, ICT Mumbai
Former DG, CSIR



Dr. Vijay P. Bhatkar

Padma Bhushan, Chancellor, Nalanda University



Dr. Vinita S. Sahay

Director, IIM Bodh Gaya



Prof. Anil Kumar Gupta

Vice-Chair, National Innovation Foundation



Shri Rajeev Sethi

Padma Bhushan, Chairperson, Asian Heritage Foundation



Prof. Rishikesh Krishnan

Former Director, IIM Bengaluru



Prof. Bhushan Patwardhan

Prof. of Health Sciences, Former Executive Committee Chairman, NAAC



Prof. G. Raghuram

Former Director, IIM Bengaluru



Prof. Himanshu Rai

Director, IIM Indore



Prof. Sudhir Krishnaswamy

Vice-Chancellor, NLSIU Bengaluru



Prof V. G. Naraynan

Prof. Business Administration, Harvard Business School



Prof. Kavil Ramachandran

Prof. of Entrepreneurship (Practice) & Senior Advisor, Thomas Schmidheiny Centre for Family Enterprise, ISB



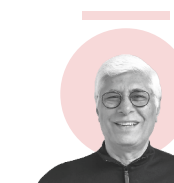
Adv. Dr. Lalit Bhasin

Sr. Advocate & Arbitrator



Dr. Milind Kamble

Founder, DICCI



Shri Nishith Desai

Founder, Nishith Desai Associates



Prof. Praveen Nahar

Former Director, NID



Dr. Ashok Joshi

Eminent Scientist, President, Microlin Technologies, USA



Prof. Trilochan Sastry

Former Dean, IIM Bengaluru



Prof. Uday Desai

Former Director, IIT Hyderabad



Shri Pramath Raj Sinha

Founder & Trustee, Ashoka University



Dr. Varun Sahni

Prof. at JNU, Former Vice-Chancellor, Jammu University and Goa University



Late Prof. Mendu Rammohan Rao

Dean Emeritus of Indian School of Business (ISB), Hyderabad

A Vision for the Future of Education

The transdisciplinary model at WPU GÖA is shaped through collaboration with **1,000+ scholars worldwide**, across **38 national and international conferences**. Educators, industry experts, artists, and thought leaders came together to design an education model that responds to a rapidly changing world.



Inaugural Visioning Conference

GOA, 2nd-4th May, 2025



Integrating indigenous knowledge to advance higher education: A transdisciplinary perspective

48 professors across institutes of eminence **IIT, IIM, NLSU, NID** etc.



National Visioning Conferences

Aug.-Sept., 2025



Envisioning **Tomorrow's University:** A transdisciplinary dialogue on the futures of education

28 cities across India 664 faculty participants, scholars from **IITs, IIMs, NLU, NIDs** and other leading institutions



Global Visioning Conferences

Sept.-Nov., 2025








Connecting Continents, **Transforming Learning:** A transdisciplinary dialogue for futures of education

10 countries 281 World-class academicians, innovators and change-makers across **six continents**



A new model of higher education

Moving beyond siloed degrees, WPU G \bar{O} A offers an integrated, systems-oriented learning experience through:




-  Transdisciplinary curriculum
-  Discovery-driven pedagogy
-  Integrated research ecosystems
-  Living Learning Scholar Communities
-  Centres of Excellence for fundamental and applied knowledge



Vision

To be the world's leading transdisciplinary university dedicated to peace and sustainability, designing and demonstrating regenerative futures, where human societies thrive in harmony within planetary boundaries.

Mission

-  **Educate** empathetic, systems-thinking leaders.
-  **Generate** transformative, actionable research.
-  **Catalyse** real-world innovation and policy.

WPU G \bar{O} A, the next iconic university of our country, is a **purpose-built university for the 21st century designed for complexity, rapid change, and India's future.**

It is engineered around one idea: *“Complex problems require integrated thinkers.”*



Integration is the *new intelligence*

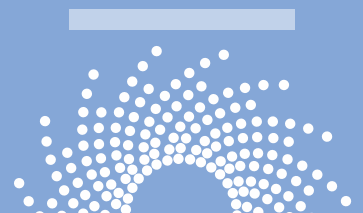
LEARN

Academic Programmes

What You Learn

You build strong knowledge in your chosen field while exploring ideas across subjects.

What you learn in class connects directly to research, projects, and real-world work.



LIVE

Learning Communities

How You Live and Learn

Students live and learn together in shared communities built around real-world themes.

This strengthens teamwork, leadership, and helps you apply what you study every day.



DISCOVER

Research Institutes

How You Explore and Discover

From the first year, you take part in real research linked to new technologies and social needs.

Your coursework feeds into research, and research deepens your learning.



APPLY

Centres of Excellence

How Ideas Become Action

Labs, studios, and industry partnerships turn ideas into real solutions.

Here, what you learn and research becomes hands-on experience.



BECOME

Human Performance

How You Grow as a Person

Daily wellness, fitness, and focus help you stay healthy, confident, and resilient.

A strong body and mind support everything you learn and create.

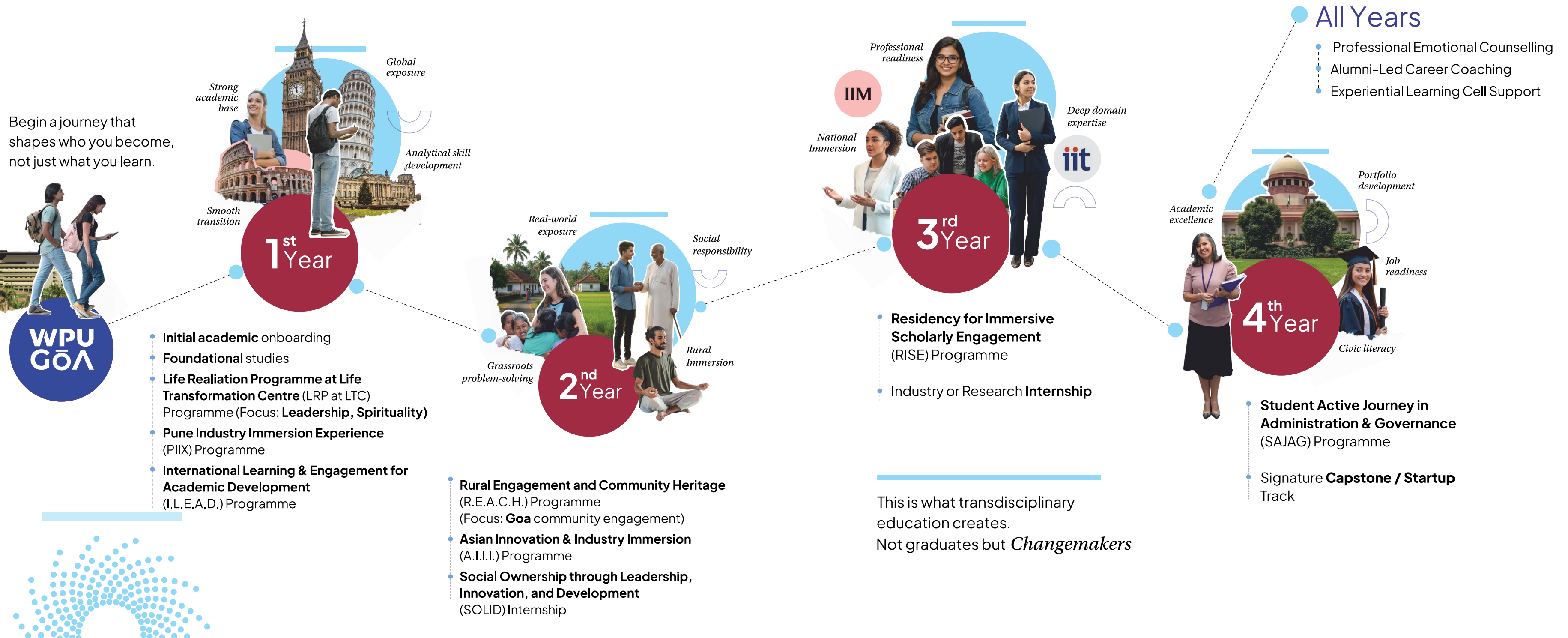


WPU GOA is built on five interconnected pillars that work together to transform education.

*Individually strong.
Together, transformative.*

The *World* is your *Campus*

Begin a journey that shapes who you become, not just what you learn.



One Degree. Many Possibilities. *Boundless Opportunities.*

At WPU G \ddot{O} A, every programme is designed to go beyond one field.
Engineers learn **business and social science**.
Designers learn **technology and human behaviour**.
Business students learn **technology and ethics**-
so every student graduates with a broad, future-ready mindset.

Academic Programmes



Bachelor of Management Studies (BMS) (Hons.)
(Global Business and Entrepreneurship, Digital Economy and E-Commerce, Business Strategy and Systems Design)



B.Sc. (Hons.) in Psychology
(Organizational Behaviour, Industrial Psychology, & Consumer Psychology, Educational & Counselling Psychology, Sports & Performance Psychology)



B.Tech. in Computer Science & Engineering
(Artificial Intelligence & Machine Learning, Data Science & Analytics, Cybersecurity & Systems Design)



B.Des. in Integrated Product Design
(Service & Systems Design, Sustainable Design, Interaction Design)
B.Des. in Communication Design
(Visual Communication & Identity Systems Design, Animation and VFX Design, Interaction Design)

Over the coming years, students can look forward to a wider range of undergraduate, postgraduate, research, and professional pathways across technology, business, design, law, health sciences, liberal arts, sustainability, and emerging domains. This expanding ecosystem represents our long-term commitment to academic innovation, industry engagement, international outlook, and transformative student outcomes.

For ambitious learners seeking to shape the future, this is only the beginning.

Immersion

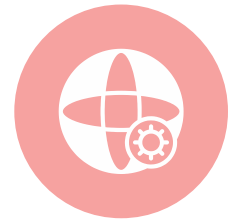
By the time students graduate, they have worked in **five different ecosystems, across three sectors, solving real-world problems.**

LEARN



Global Exposure

- International Immersion (innovation hubs, global firms, design studios, smart city labs, accelerators)
- Global exchange programmes



National Systems Exposure

- National Immersion at leading institutions (IITs, IIMs, research centres)
- Exposure to industry ecosystems across India



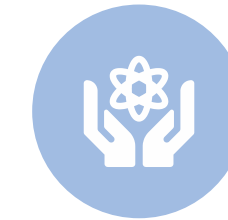
Industry-Facing Experiential Learning

- Industry visits
- Leading global trade shows
- Industry internship



Societal Immersion and Behavioural Insight

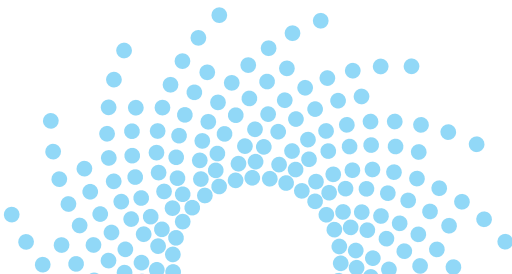
- NGO internship / social immersion (rural livelihoods, social enterprises, SHGs, development systems)
- Local economy studies, behavioural research and community-based projects



Holistic Development and Values Formation

- Life Transformation Centre immersion
- Learning in ethics, leadership, emotional intelligence, identity, and purpose
- Student Active Journey in Administration & Governance training

We don't just prepare students for the real world - they have already lived in it, many times and in many ways.



Living Learning Scholar Communities

Living Learning Scholar Communities are student groups built around big ideas and real-world problems. Students come together to explore what they care about, share ideas, and create solutions. Here, you don't just study, you work in teams, take responsibility, and learn by doing. It's learning with purpose, alongside people who share your interests.



Ethics and Critical Reasoning

Explore values, fairness, and responsible choices.

For students passionate about justice, integrity and ethical decision making.



Media, Arts & Society

See how stories, art, and media shape culture.

For creators, communicators, and cultural thinkers.



Global Citizenship and Youth Leadership

Learn how to lead and make a difference in the world.

For students who want to create change locally and globally.



Environmental Action and Studies

Learn about sustainability, climate, and protecting the planet.

For students who care about the Earth and the future.

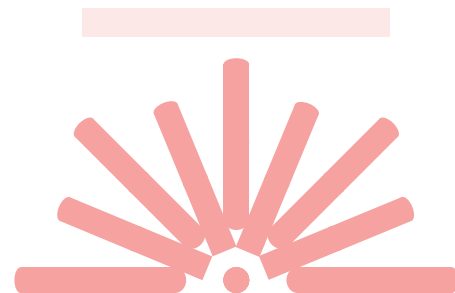


Design, Technology and Society

Use design and innovation to solve real problems.

For makers, technologists, and creative problem-solvers.

LIVE



Research Embedded in Academics

At WPU G \ddot{O} A, you are a researcher from day one. Research is not separate from student life, it is part of your classes, projects, and learning.

This builds curiosity, critical thinking, and the confidence to solve real-world problems.



Research Institutes

Our Research Institutes let students explore deep topics or work across different fields. You join research teams early, learning how to ask questions, test ideas, and create solutions.



Human - Machine Interaction (AI / Data Science for Society)

Human Centric AI and Interaction, Data Science for Social Good, Human - Robot Interaction, Responsible & Ethical AI.



Environmental Sustainability and Resilience

Climate Change Solutions, Renewable Energy, Circular Economy, and Waste Management.



Ocean Sciences and Management

Ocean and Coastal Ecosystems, Sustainable Blue Economy, Ocean Technology and Innovation, Marine Policy.



Advanced Materials, Manufacturing and Energy Systems

3D Printing, Next-Generation Energy Systems, Materials and Energy for Mobility, Industry 4.0 & Automation.



Biodesign and Biotechnology

Synthetic Biology & Genetic Engineering, Agricultural and Food Biotechnology, Computational and Systems Biology.



Prof. M. S. Swaminathan

Centre for
Biohappiness

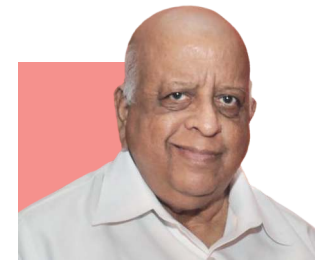
To build India's first integrated ecosystem where nature, agriculture, health, technology, AI, data, society, livelihoods, and policy come together to create real solutions for a sustainable and fair future.



Prof. Raghunath Mashelkar and Prof. Anil Gupta

Centre for
Inclusive Innovation

To drive simple, affordable, and community-led innovations by combining grassroots knowledge, scientific thinking, and collaboration across research institutes, learning communities, and global partners.



Shri T. N. Seshan

Centre for Government
Leadership & Public Policies

To develop honest and future-ready leaders rooted in India's values, combining strong leadership, modern governance, ethical decision-making, youth participation, and global exposure to build fair and people-focused public systems.



Shri Rajeev Sethi

Centre for
Design Research

To advance design research that brings together systems thinking, human-centered design, and real-world practice to solve social, environmental, and technological challenges at every scale.



Centre for Creativity,
Film & Music

To grow the next generation of creators by blending arts, culture, and technology, while taking India's creative traditions to the global stage.



Centre for Transdisciplinary
Education & Research

To help students think across subjects and cultures by working with experts and communities to solve complex problems with empathy and clarity.

Centres of Excellence



Prof. Vishwanath Karad

Centre for Brain, Mind
& Consciousness

To promote peace and harmony by understanding how religion, spirituality, and justice-based institutions help build fair and inclusive societies.



Prof. Ram Charan

Centre for Strategic Leadership &
Organisational Governance

To develop leaders and organizations that think clearly, act with discipline, lead ethically, and achieve long-term success by connecting strategy with strong execution.



Prof. Fernando Garibay

Centre for Diplomacy,
Human Creativity & Artificial Intelligence

To bring together human creativity and AI to build people-focused technologies that support global understanding, conflict resolution, and community well-being through international collaboration.

WPU GÖA's Centres of Excellence connect the university with society and industry. They bring real-world needs and new technologies into learning, helping students become skilled professionals and meaningful contributors.

Connecting

- Society
- Industry
- Education



Human Performance & Longevity

The College of Human Performance and Longevity is a core part of the WPU G^oA experience.

WPU G^oA is India's first Human Performance and Longevity Campus. While academics build the mind and purpose, this college builds the body, habits, and resilience that support lifelong success.



BECOME

Integrated Focus Areas



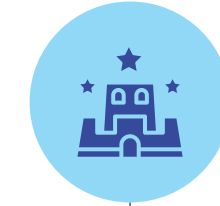
Campus Health, Nutrition and Fitness

Health is part of daily life through movement, strength training, balanced nutrition, fitness tracking, and stress and sleep care. This helps students stay sharp, active, and energized.



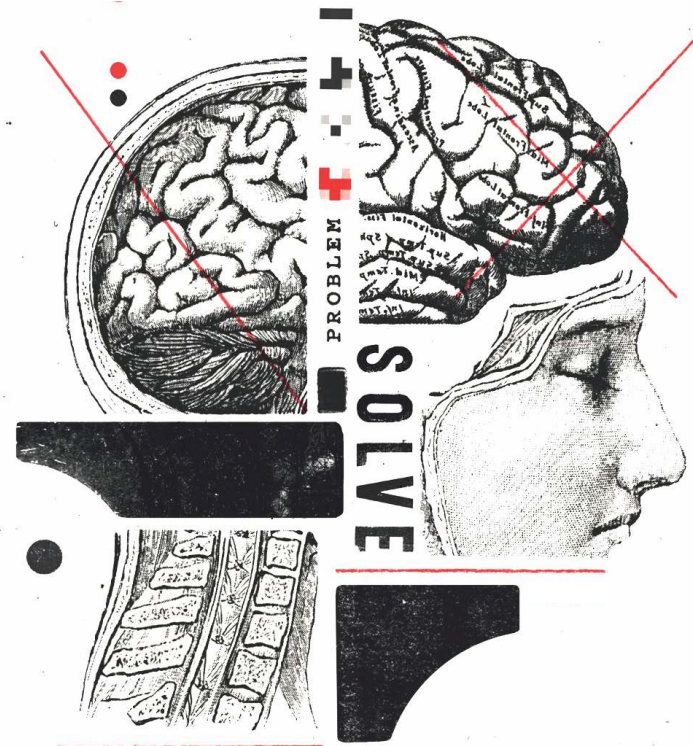
Sports Centre of Excellence

A high-performance sports ecosystem with scientific training and expert coaching to help students compete at state, national, and international levels.



Longevity Campus Initiative

A campus designed to support long, healthy lives, with active spaces and Blue Zone-inspired nutrition and habits.



Beyond Academics

Our guiding philosophy is simple:

Students should not only learn well, they should live well.

True success comes from a strong mind, a healthy body, a disciplined lifestyle, and a sense of purpose. This college ensures students graduate with not just knowledge, but also energy, focus, and lifelong wellness habits.



Goa is not just our location, it is our living classroom.

It reflects the world in one place, where growth meets nature, culture meets tourism, and local life meets global ideas. This makes Goa the perfect place to learn how to create balanced and sustainable solutions.

Goa is also a place for dreamers, creators, and bold thinkers. Its natural beauty and rich culture inspire focus, creativity, and well-being, the ideal setting for personal and professional growth.



Here, everyday life is about finding harmony between nature, ideas, and yourself.



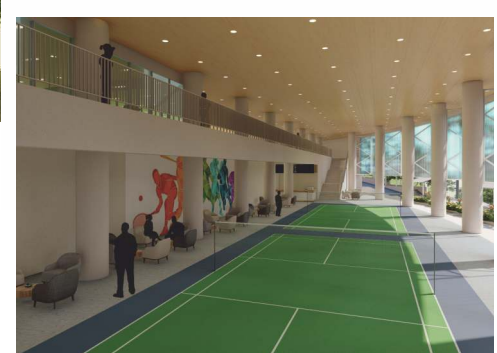
Goa is home to artists, designers, musicians, filmmakers, and thinkers from around the world. This creative energy makes it the perfect place for our programs in Technology, Design, Management, and Liberal Arts. Here, your surroundings inspire new ideas, it's like living in an open studio.

Goa is also one of India's safest, cleanest, and most peaceful places to live. Its fresh air and calm environment help you stay focussed, confident, and ready to build a successful career.

With its rich history and mix of cultures, Goa is full of music, art, and community life. This strong cultural base, combined with global exposure, helps you grow with empathy, purpose, and a clear sense of who you are.

The Campus

A Purpose-Built Ecosystem



At WPU GÖA, learning goes beyond classrooms. Our fully residential campus is designed as a living ecosystem where nature, ideas, and different fields come together. Designed by renowned architect Stephen Paumier, the campus features open courtyards, natural light, and seamless indoor-outdoor spaces that bring students from Engineering, Design, Sciences, and Liberal Arts together, sparking ideas and collaboration.

Every space supports teamwork, and resilience, while offering a high-quality and sustainable way of living and learning. This purpose-built campus encourages creative thinking, real problem-solving, and personal growth.

It is a place where *purpose meets possibility, and where you discover who you are meant to become.*





S. No. 88, Sub-Division No. 1-B, Thivim Village of Bardez Taluka, Goa



Student Housing Block



Student Dining



Sports Complex



Swimming pool



Sports Complex



Auditorium

Faculty Housing Complex



Sports Complex



Sports Complex



Library

Academic Block



Thivim Railway Station 2-5 mins



Mapusa 15-20 mins

Panaji 35-40 mins



Mopa International Airport 30 mins



Goa International Airport (Dabolim Airport) 60 mins





Admissions

The WPU G \ddot{O} A Admissions Committee looks beyond academic performance in standardized tests and board exams, seeking candidates who demonstrate strong character, meaningful experiences, and clear future motivation. Our admissions process is designed to identify well-rounded, high-potential students who can actively contribute to and enrich the learning environment at WPU G \ddot{O} A.

Apply early to secure your place at one of India's most forward-looking universities.

At WPU G \ddot{O} A, we evaluate candidates based on their holistic performance using the ABC Model across all evaluation parameters.



A single score does not determine selection; instead, emphasis is placed on the overall profile, which should demonstrate strength and potential in various aspects.

Three *Core Pillars* of Selection

WPU G \ddot{O} A looks for students who demonstrate at least one of the three interconnected dimensions of our ABC Model that reflect the skills and mindset essential for thriving in our transdisciplinary learning environment.



Agility & Empathic Responsiveness

Your ability to adapt to change, show resilience, and demonstrate empathy.



Broad-Minded Learning Orientation & Self-Development

Your capacity for curiosity-driven learning, independent thinking, and openness to growth.



Curiosity for Complex Problems & Co-Creation for Change

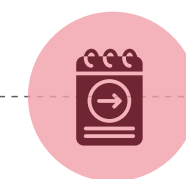
Your interest in real-world challenges and resolving them through collaboration and teamwork.



Admissions *Process*



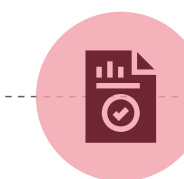
Register online



Appear for the Entrance Exam



Appear for the Online Personal Interaction



Receive Result



Pay and Confirm


Apply today and secure your place!

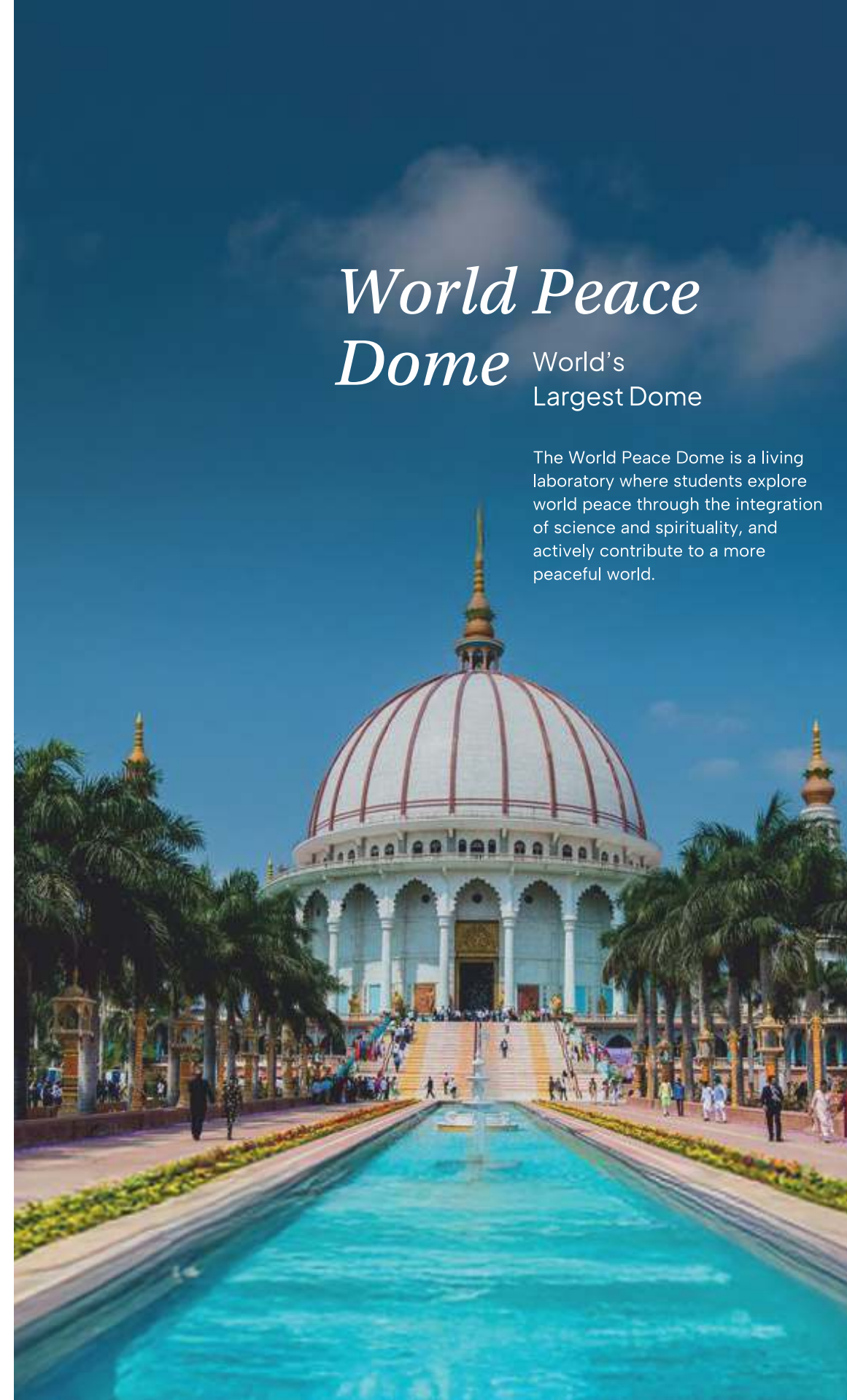


Refer to our website for more details



Overview of *MAEER & MIT Group*

5 Universities	86000+ Students
2000+ Bed Hospital	25+ CBSE and State Board Schools
40+ Higher Education Institutes	Multiple Social Projects
2 Medical Colleges (3 rd Coming Soon)	



World Peace Dome

World's
Largest Dome

The World Peace Dome is a living laboratory where students explore world peace through the integration of science and spirituality, and actively contribute to a more peaceful world.

The Flagship University MIT-WPU, Pune *at a glance*

50 Cr Scholarships	100+ Students Clubs
240+ Modern Labs	45+ Nationalities
2000+ Industry Connects	20+ Centres of Excellence
540+ Patents	25000+ Students on Campus
100000+ Alumni Across the Globe	6000+ Research Publications

Asia's First Subsea Laboratory

*Among the top 10 educational
foundations/trusts in India*



**WPU
GŌA**

We nurture creative, future-ready leaders through transdisciplinary, inclusive, sustainable and globally relevant education.

WPU GŌA Campus Address:

S. No. 88, Sub-division No. 1-B, Thivim Village of Bardez Taluka, GOA

For Admission:

✉ admissions@wpugoa.edu.in ☎ +91 86050 07433



www.wpugoa.edu.in

[f](#) [@](#) [X](#) [v](#) /WPU GOA